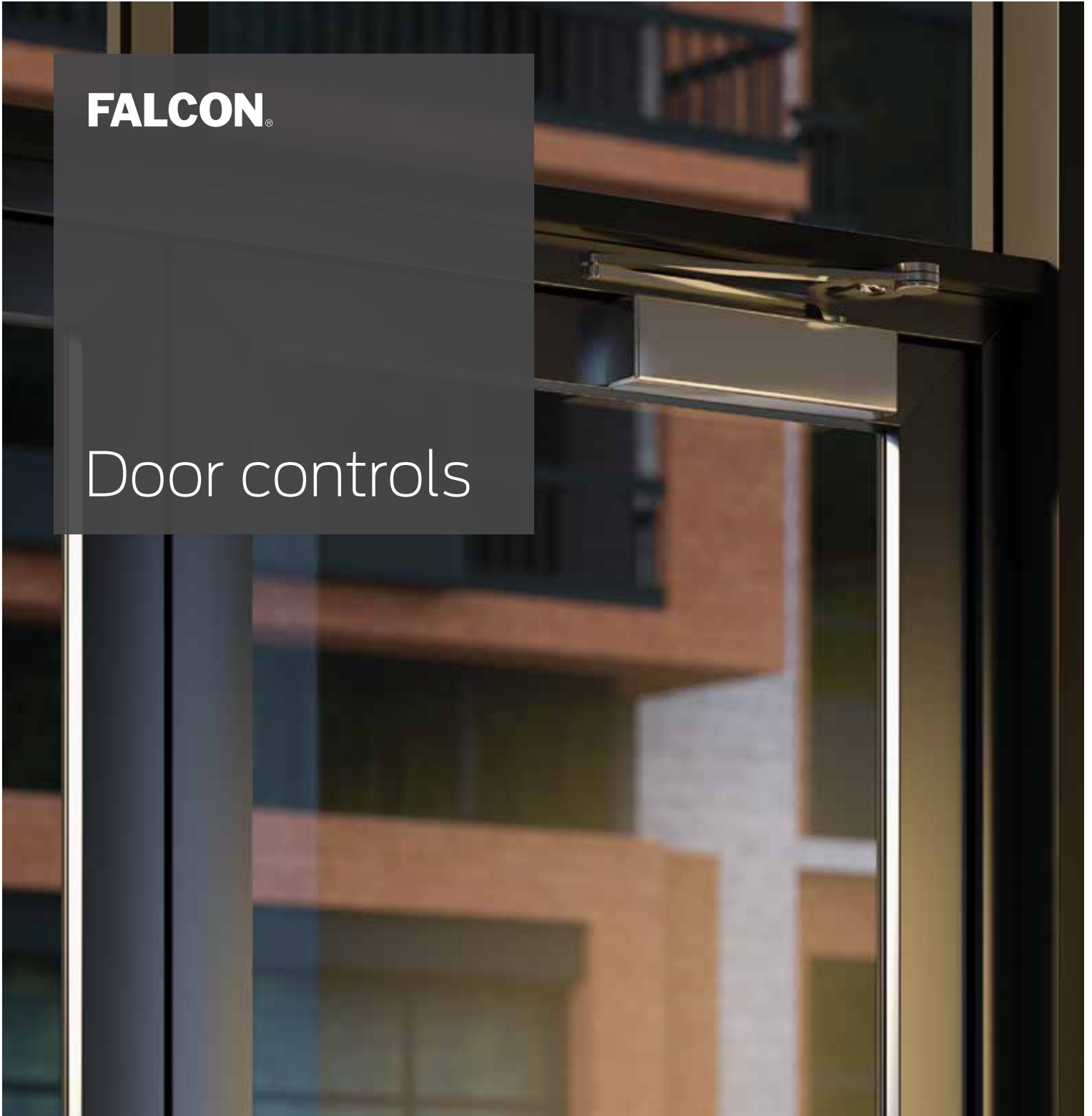


FALCON®

Door controls



8200 Series

The automatic operator that changes everything

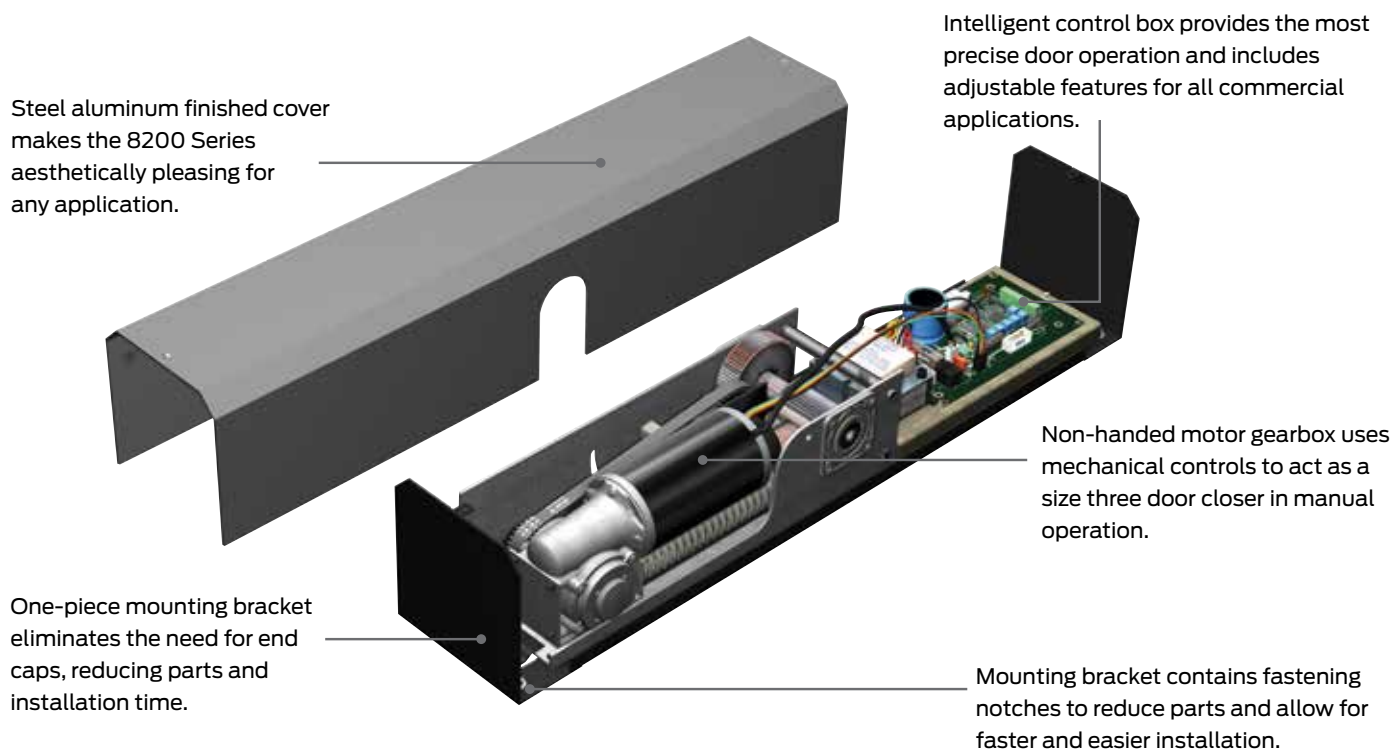
Beauty, value and versatility are now automatic

When you need a smart solution to improve accessibility the Falcon 8200 Series fits perfectly. Designed for applications like assisted living and ambulatory care, where ease of use is critical, the Falcon automatic operator provides dependable performance at an affordable price point. Everything you need is right in the box, making installation quick and simple. All necessary features are built right in, so configuring the closer is simple and you can easily make more openings more accessible than ever.

Designed to fit perfectly

The small footprint and elegant design of the Falcon 8200 Series make it a perfect solution for a range of applications.

• Assisted living • Hospitality • Retail • Small office • Restaurants • Ambulatory care





The Falcon 8200 Series automatic operator ensures smooth, convenient door opening for areas requiring easy accessibility and ADA compliance. This versatile device can also be easily integrated into electrified openings with our wireless accessory offering. Choose the 8231 for pull side or the 8242 for push side installation.



SmartLatch – Senses and overcomes external pressure conditions with a graduated energy assist for secure latching.



Push 'n' Go – Selectable feature allows door to open automatically as soon as it feels pressure.



Open position learning – Automatically sets the opening position and detects obstructions to eliminate wall and door damage.



Pre-load strike assist – Removes load on strike lip with a one second delay allowing the door to release and automatically open.



LED light illumination – Light illumination on control box signals accurate installation and helps with connection diagnostics.



On board power supply (12 VAC) – Powers actuators and receivers without the need to install an external power supply.

Specifications

Header length	26"
Mounting	Surface mount
Handing	Non-handed
Cycle tested	1 million gear box
Door weight	200 pounds

Consult technical services for use on doors over 200 lbs.

Adjustable features:

Hold-open time delay
Backcheck speed
Backcheck/latch position
Opening/closing speed

Actuators and accessories



8310-852T shown

6" Round – text with logo

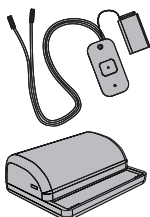
8310-852T	Push plate, wall mount
8310-869F	Mounting box, flush
8310-869S	Mounting box, surface
8310-802	Weather ring



8310-818T shown

1 1/2" x 4 3/4" Jamb – text with logo

8310-818T	Push plate, jamb mount
8310-819F	Mounting box, flush
8310-819S	Mounting box, surface

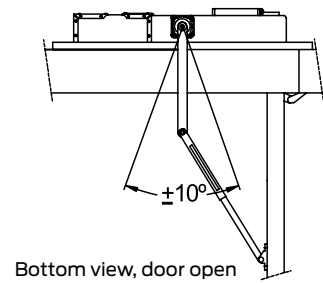
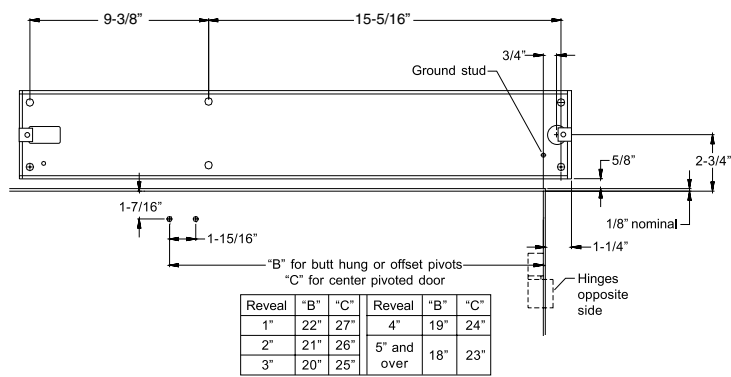


8310-844J and 8310-865 shown

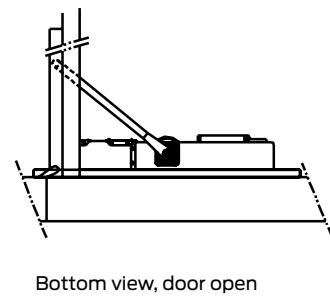
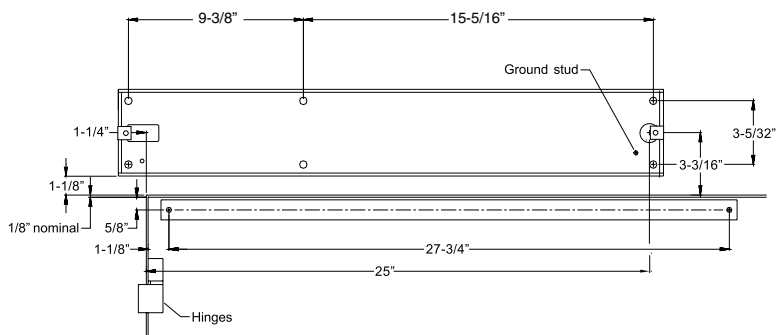
Wireless transmitters & receiver

8310-844	Transmitter, wall mount (to be used with 6" round wall mounted actuator)
8310-844J	Transmitter, Jamb mount (to be used with 1 1/2" x 4 3/4" jamb actuator)
8310-861	Transmitter, Handheld (single button wireless handheld transmitter)
8310-865	Receiver (wireless receiver with sequencing function)

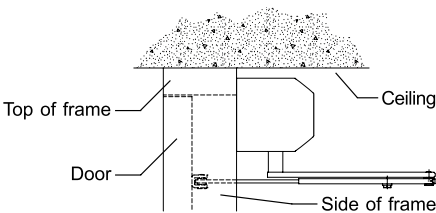
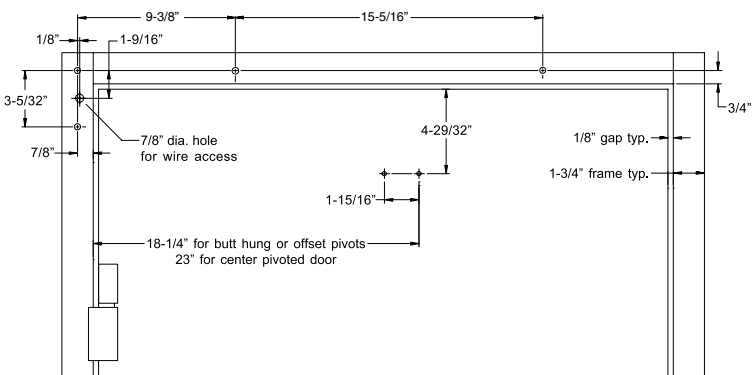
26" Push system



26" Pull system



26" Drop system (push system only)



Cylinder options

Standard cylinder (STD) – Standard cylinder provides a main speed function to control the motion of the door from maximum opening angle until the door is a few inches from the latch where latch function controls the final closing motion. The opening swing is controlled by the hydraulic backcheck function from about 70° to maximum opening angle.

Delayed action cylinder (DEL) – Special cylinder provides a separate adjustable delayed closing motion from maximum opening angle to approximately 70°. Then the main speed function controls the door motion until the door is a few inches from the latch where latch function controls the final closing motion. During the opening swing the door is controlled by the hydraulic backcheck function from about 70° to maximum opening angle.

Competitive cross reference

Surface closer cross reference

Falcon	SC60A	SC70A	SC80A	SC90A
Norton	*1600BC	*7500/ 7700	*8500	1700BC
Hager	*5300	5100	*5200	5400
Stanley	*D-1650	D-4550	D-3550	
Yale	*50/ 51BC/ 1100	*4400	3300/ *3500	5100BC
Sargent	*1130	280/350	*1330	
Corbin		DC8000	DC3000	
Dorma	7400	8900	*8600	7300/ 7200

* identical footprint to listed Falcon closer.

Concealed closer cross reference

Falcon	OHC100 Series
Dorma	RTS88
Global	TC7000
International	Series 200, Series 300, Series 500
Jackson	20-330
Kawneer	Husky II
Sentinel	30 Series